

# Office of Institutional Data, Analytics and Reporting

## Post-Baccalaureate

Enrollment and Graduation Pattern

# 2019-2020

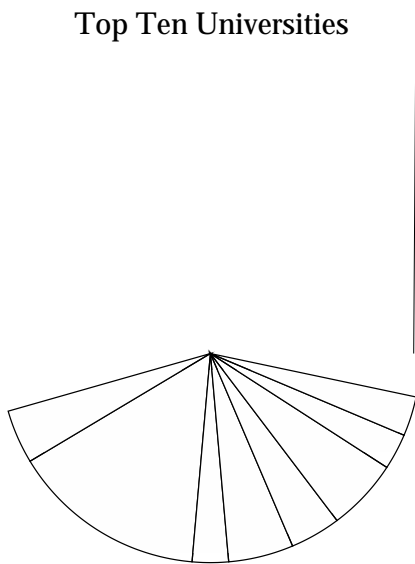
## Enrollment/Graduation Pattern of Students Graduating From UST

Please Make your Selection: --> Undergraduate

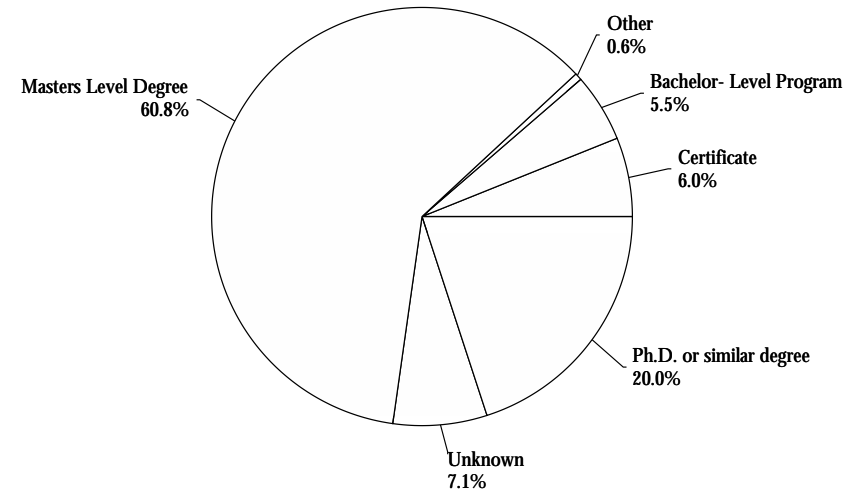
### Annual Trend

	2010	2011	2012	2013	2014	2015	2016	2017	2018	2019	2020
Graduated from UST	1,308	1,334	1,259	1,357	1,446	1,357	1,421	1,362	1,386	1,439	1,108
Enrolled after graduating from UST	529	526	492	446	474	421	370	331	314	262	17
Graduated from another program	416	395	360	306	303	234	168	108	48	6	
% of Students Enrolled	40%	39%	39%	33%	33%	31%	26%	24%	23%	18%	2%
% of Students who Graduated from another Program	32%	30%	29%	23%	21%	17%	12%	8%	3%	0%	0%

Top Ten Universities



Degree Category (as a percent)



## Enrollment/Graduation Pattern of Students Graduating From UST

---

Please Make your Selection: --> Undergraduate

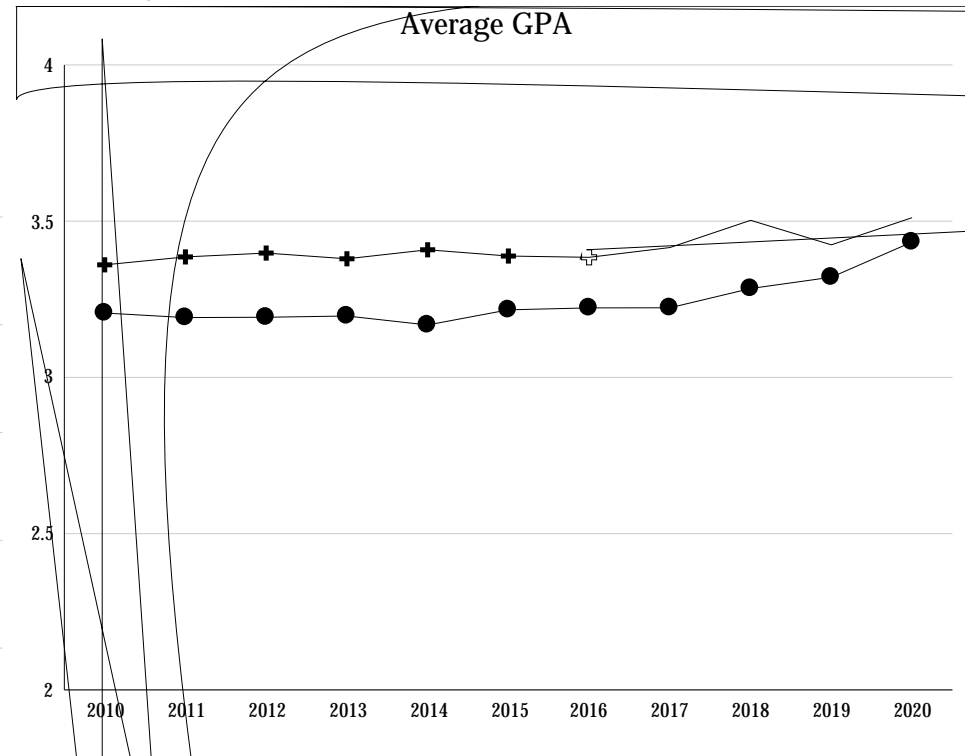
	Degree Category									
	2010	2011	2012	2013	2014	2015	2016	2017	2018	2019
Bachelor- Level Program	28	22	22	13	19	9	12	9	3	
Certificate	22	20	21	18	18	16	11	8	7	2
Masters Level Degree	265	254	225	177	172	141	98	64	36	4
Other	2	3		1	2	3		1	2	
Ph.D. or similar degree	71	77	80	81	77	54	38	19		
Unknown	50	28	25	20	18	11	10	7	1	



# Enrollment Pattern of Students Graduating From UST

Please Make your Selection: --> Undergraduate

Enrollment within years (as a percent)



## Enrollment/Graduation Pattern of Students Graduating From UST

Please Make your Selection: --> Graduate

### Annual Trend

2010    2011    2012    2013    2014    2015    2016    2017    2018    2019    2020

Graduated from UST



## Enrollment Pattern of Students Graduating From UST

Please Make your Selection: --> Graduate

### Top Ten Colleges

	2010	2011	2012	2013	2014	2015	2016	2017	2018	2019	2020
UNIVERSITY OF ST THOMAS	129	125	126	118	74	86	101	128	122	90	18
UNIVERSITY OF MINNESOTA-TWIN CITIES	14	11	8	7	5	10	3	5	3		
COLORADO STATE UNIVERSITY - PUEBLO	15	16	11	13	6	11	11	7	2	2	
HAMLIN UNIVERSITY	3	8	2	3	6	4	2	1	1		
ST MARYS UNIV--MINNEAPOLIS	10	11	7	10	4	3	3	2	3	2	
ST MARY S UNIV--MINNEAPOLIS							1	1			
MINNESOTA STATE UNIVERSITY - MANKATO	3	2	2	4	2		6		2	1	
ST CLOUD STATE UNIVERSITY	5	1	5	3	1		3	2	1		
ST. CATHERINE UNIVERSITY	5	6	4		1	3	1	1	1	1	
CONCORDIA UNIVERSITY - COHORT/SCS	1	1		1	1	4	1	3	3	2	
CONCORDIA UNIVERSITY AT ST PAUL		1	1	3							
Other	81	68	54	50	34	55	45	41	20	7	

Enrollment within years (as a percent)

### Average GPA

